

CENTRAL KOOTENAY INVASIVE PLANT COMMITTEE

2013 ANNUAL SUMMARY REPORT



Report Prepared by:



Crystal Klym, P.Ag., Executive Director
Jennifer Vogel, P.Ag., Program Manager
Matt Chilakos, Program Technician

March, 2014

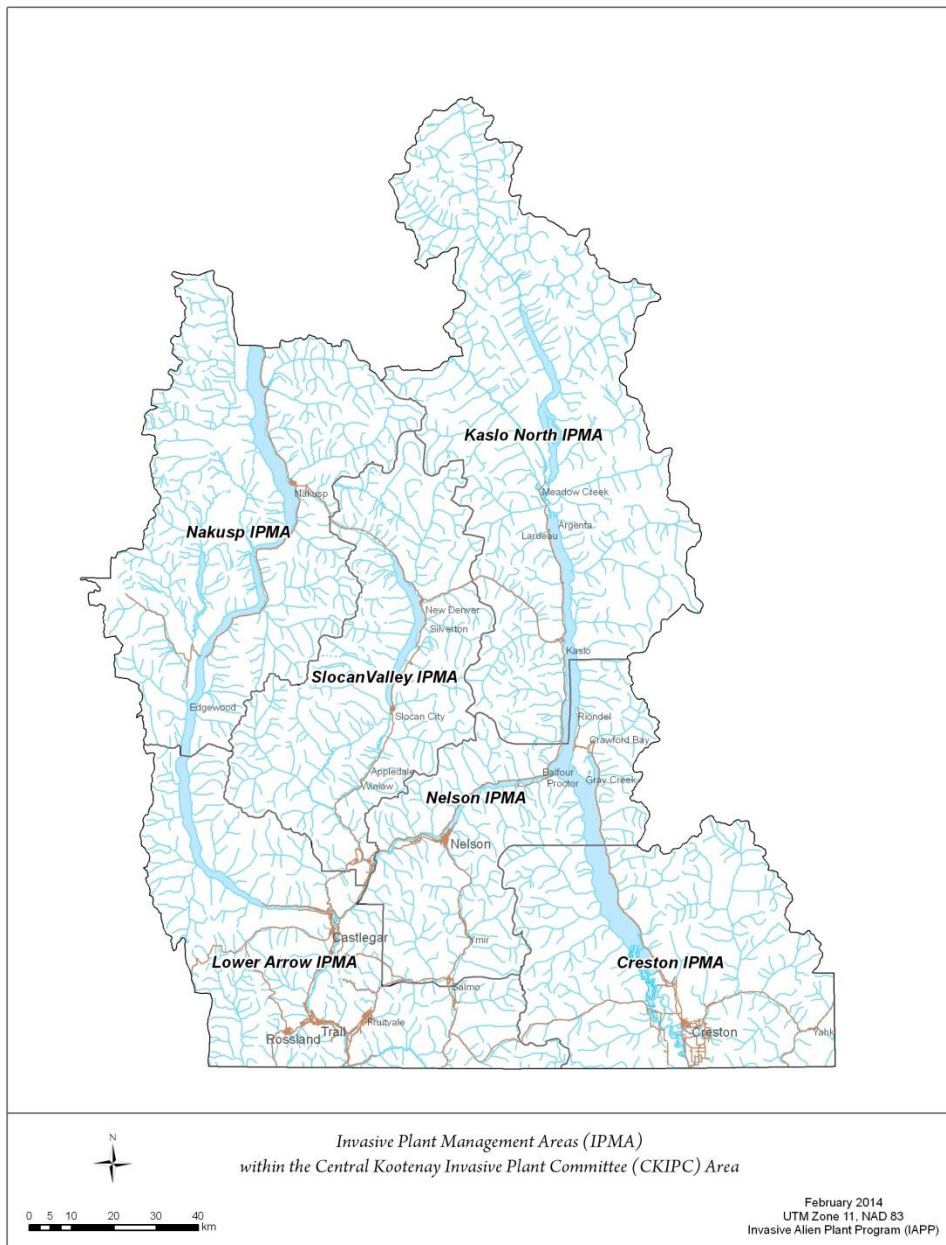
ACKNOWLEDGEMENTS

The Central Kootenay Invasive Plant Committee (CKIPC) is extremely grateful for funding contributions in 2013 from the Province of British Columbia (Ministries of Forests, Lands and Natural Resource Operations and Transportation and Infrastructure), Regional District Kootenay Boundary, Regional District Central Kootenay, Columbia Power Corporation, Evergreen-Canon's Take Root Program, BC Marine Trades Association, Government of Canada, BC Hydro, Invasive Species Council of British Columbia, Columbia Basin Trust, FortisBC Inc., FortisBC Energy Inc., BC Wildlife Federation, The Nature Trust of BC, BC Conservation Foundation, Nature Conservancy of Canada, and Waneta Expansion Ltd. Partnership. We would also like to acknowledge the generous in-kind support from directors, members, volunteers, and all other supporters who contributed to the successful and timely delivery of CKIPC's many projects and programs. **Thank you** and we look forward to working with you on many new and exciting initiatives in 2014!

INTRODUCTION

The Central Kootenay Invasive Plant Committee (CKIPC) was formed by a group of residents and company/agency representatives who were interested in promoting a collaborative approach to invasive plant management. CKIPC became a non-profit society in February 2005 and currently has over 400 members from a diversity of perspectives, including industry, all levels of government, concerned citizens and landowners, utilities, consultants, and non-government organizations.

Figure 1. Overview the Central Kootenay Invasive Plant (CKIPC) region



Vision Statement

A network of partners collaborating to minimize the impacts of invasive species on the ecosystems, communities, and economy of the Central Kootenay region.

Purposes

The Central Kootenay Invasive Plant Committee is a non-profit society that was formed by a group of residents and company/agency representatives who were interested in promoting collaborative approaches to invasive plant management in 2005. The Committee includes representatives from non-profit societies, utility companies, government agencies, and regional companies.

The purposes of the Society (as per the Committee's Constitution), within the geographic area of the Regional District of the Central Kootenay and Areas A & B of the Regional District of the Kootenay Boundary, are to:

1. Raise awareness and educate the public, government agencies, and other land managers about invasive species and their impacts in the area;
2. Prevent the further introduction and spread of invasive species in the area through education and awareness, early detection and control, and coordinated integrated weed management efforts;
3. Promote coordinated and collaborative management of invasive species between agencies and land occupiers;
4. Work towards the control/containment of highly invasive non-native species;
5. Provide a conduit for information and a source of expertise on invasive species; and
6. Develop and maintain a comprehensive inventory of invasive species within the area of responsibility.

CKIPC pursues these goals by focusing on four program areas: 1) inventory and mapping, 2) on-the-ground treatments, 3) coordination and administration, 4) education and awareness. CKIPC intends to continue expanding its collaborative on-the-ground operations through the development and implementation of Invasive Plant Management Area Operational Framework (IPMA) plans. CKIPC's activities focus on the Regional District of the Central Kootenay (RDCK) geographic area, and Areas A and B of the Regional District of the Kootenay Boundary (RDKB). Activities that occur within the RDKB are coordinated in collaboration with the Boundary Invasive Species Committee (BISC).

The purpose of this report is to summarize activities completed by CKIPC from January, 1st 2013 to December, 31st, 2013, including inventory and mapping, on-the-ground treatments, administration and coordination, education and awareness, provincial and regional collaboration initiatives, and financial statements. Additionally, program activities are proposed for 2014.

SUMMARY OF ACTIVITIES

The following sections provide an overview of activities completed in 2014.

Inventory and Mapping

Similar to 2012, the strategy for inventory in 2013, was to complete multi-species inventory on high priority sites and/or where inventory gaps existed in the region. Where possible, multiple jurisdictions were inventoried within an area to increase program efficiencies. Site assessments and inventories were conducted, as required, prior to treatment activities (i.e., mechanical and/or chemical control). Provincial Invasive Alien Plant Program (IAPP) inventory standards (www.for.gov.bc.ca/hra/plants/application.htm) were used and a Site and Invasive Plant Inventory Record was completed for each site. All inventory data has been entered into IAPP for a total of 2840 completed invasive plant surveys in 2013.

Regional District Kootenay Boundary (Area A)

This was the fourth year that the CKIPC coordinated the *RDKB Area A Invasive Plant Program* in collaboration with Boundary Invasive Species Committee. During the 2013 season, CKIPC coordinated chemical and manual treatments, conducted inventories and efficacy checks, and provided information and educational resources to landowners and the general public. CKIPC completed several extensive invasive plant inventories in 2013, to ascertain priority areas. These inventories were carried out on both private and partner lands using CKIPC's *Priority Terrestrial Target Species* list¹.

Ministry of Forests, Lands and Natural Resource Operations

CKIPC completed extensive multi-species invasive plant inventories. Target species that were concentrated on included; giant hogweed (*Heracleum mantegazzianum*), greater celandine (*Chelidonium majus*), blueweed (*Echium vulgare*), scotch broom (*Cytisus scoparius*), Himalayan blackberry (*Rubus armeniacus*), mouse-ear hawkweed (*Hieracium pilosella*), and other regional priority invasive plant species.

Ministry of Transportation and Infrastructure (RDKB Area A and B, RDCK)

CKIPC conducted inventories for the Ministry of Transportation and Infrastructure (MOTI) throughout the RDKB (Areas A and B) and the RDCK. Activities focused on inventory gaps, gravel pits and invasive knotweed; 554 km of MOTI right of ways (ROW) and 46.38 ha of gravel pits were surveyed in 2013. As required, inventories and site assessments were completed prior to chemical treatments within the RDKB (McLeod Road, Seven Mile Road, Hwy 22A, Columbia Gardens, Casino Road, Station Road, Waneta-Nelway Road, Handley Road, Hwy 3B and Hutchison Pit). These inventories were carried out on both private and partner lands using CKIPC's *Priority Terrestrial Target Species* list.

BC Hydro

CKIPC completed extensive multi-species invasive plant inventories in 2011. As such, minimal sites were inventoried in 2013 and efforts were focused on treatment (mechanical and chemical) and completion of a thorough gap analysis and strategic work planning process for the west/central Kootenay region.

¹ http://www.ckipc.ca/images/documents/CKIPC_IP_Priority_List__website_updated_2013.pdf

Based on CKIPC Invasive Plant Management Area (IPMA) priorities, which can be downloaded from www.ckipc.ca/resources/publications, adjacent landowner activities (i.e., FortisBC Inc., MFLRNO) and historical survey results, the following areas were prioritized for inventory and treatment in 2013: Pend D'Oreille Valley and Salmo-Creston Pass areas. Within these priority areas, approximately 12 km of BC Hydro ROW was surveyed; 2 ha of the surveyed area had invasive plant species present in significant amounts (as per IAPP standards).

FortisBC Inc.

This was the third year that CKIPC partnered with FortisBC Inc. (Electrical) to conduct inventories and manual treatments on high priority power line ROWs throughout the Central/West Kootenay Region; majority of work was focused on manual treatments in already inventoried sites.

FortisBC Energy Inc.

CKIPC completed extensive multi-species invasive plant inventories in 2011 and 2012. As such, minimal sites were inventoried in 2013 and efforts were focused on treatment (mechanical and chemical) and completion of a thorough gap analysis and strategic work planning process for the west/central Kootenay region.

CKIPC did complete inventories along the ROW from Hwy 3 (Salmo-Creston Pass) northwest towards Salmo. This area is heavily brushed; no treatment or further inventory is recommended.

The Nature Conservancy of Canada

Based on existing inventory information provided by NCC, inventory gaps were identified and prioritized for inventory in 2013. In total, 58 hectares was inventoried. Invasive species found included blueweed, bull thistle, Canada thistle, common tansy, hawkweed species, oxeye daisy, scentless chamomile, spotted knapweed, St. John's-wort, sulphur cinquefoil, and yellow hawkweed.

On-The-Ground Treatments

CKIPC and its partners chemically treated approximately ~96 ha of land for a total cost of \$70,120.50 and mechanically treated approximately ~3 ha of land for a total cost of \$26,000.00. A detailed breakdown of activities is provided below:

- In 2013, 132 km of MOTI ROW were chemically treated, and approximately 14.1 ha MOTI ROW were treated manually and/or chemically within the Lower Arrow, and Nakusp, Slocan Valley IPMA's.
- In 2013, 10.9 hectares were chemically treated, and 1 hectare was treated manually along BC Hydro ROW within the Lower Arrow IPMA.
- In 2013, ~3 ha of ROW and land were treated manually for FortisBC Inc (Electrical) within the Slocan Valley and Lower Arrow IPMA's.
- In 2013, ~9 hectares of FortisBC Energy Inc. ROW was chemically treated within the Lower Arrow IPMA.
- In 2013, 1.88 hectares of priority road networks was treated chemically on the Nature Conservancy of Canada Darkwoods property.

ADMINISTRATION & COORDINATION

As of December 31st 2013, CKIPC's Board of Directors included:

- Laurie Carr, President
- Tom Bradley, Vice President
- Terry Anderson, Treasurer/Secretary
- Carol Bell, Director
- Rob Davidson, Director
- Allan Freeborn, Director
- Catherine MacRae, Director
- Thor Smested, Director
- Sarah Macrimmon, Director
- Jim May, Past President, Director

Crystal Klym, Executive Director and Jennifer Vogel, Program Manager provided overall program management and coordination. CKIPC has continued to expand its on-the-ground operations and educational programs in 2013 with successful funding collaborations and partnerships that have been fostered by Crystal Klym, Jennifer Vogel, and the Board of Directors. Juliet Craig of Silverwing Ecological Consulting joined CKIPC as a consulting biologist, and provided invaluable expertise to the CKIPC team. In addition, the CKIPC hired its first summer student in 2013. Matt Chilakos, a student of the Selkirk College Integrated Environmental Program, joined the team for the 2013 field season. Matt was a great asset and we look forward to continuing the summer student programming pending funding in 2014.

Administrative activities that occurred in 2013 included financial resource development and management, fund development, program budget development and management, book-keeping, and financial reporting.

Coordination activities that occurred in 2013 included Board of Director and sub-committee coordination; hotline management; membership and partnership development; strategic planning; communications and information sharing; overall program coordination and management; cross-border/jurisdiction collaboration; weed coordinator working group and Invasive Species Council of BC participation; Aquatic Working Group coordination; final reporting; website, Facebook and blog updates; annual tours; and the annual general meeting.

Data management that occurred in 2013 included data entry into IAPP and mapping for operations and planning.

EDUCATION & AWARENESS

Activities undertaken in 2013 included delivery of presentations and workshops, participation in community events, landowner contact, and creation and distribution of outreach tools and publications. These activities were made possible through the funding opportunities provided by RDKB, the Province

of BC, Columbia Power Corporation, Evergreen-Canon Take Root Program, BC Hydro, Invasive Species Council of BC, Columbia Basin Trust, FortisBC Inc., BC Wildlife Federation, and BC Conservation Foundation. A detailed summary of 2013 education and awareness activities is listed below;

- Over 780 people participated in CKIPC workshop/events in 2013.
- 20 invasive species profiles, aquatic and terrestrial, developed for website.
- 8+ newspaper articles related to CKIPC activities within the region.
- Facebook and Blog updated regularly.
- Conducted 12 media interviews related to CBT funded programs.
- 8 aquatic and terrestrial species workshops delivered to interested community groups.
- Over 400 youth in local schools participated in invasive species education programming and invasive plant removal and native plant restoration events.
- Collaboration with Touchstones Museum, Royal BC Museum Aliens Among Us travelling exhibition and Trafalgar Middle School reached over 180 students.
- Invasive Species Week Awareness Campaign, June 2013. Created banner for Baker Street Nelson, collaborated with Rel-ish Bistro Nelson on a week special menu that highlighted invasive species, and coordinated a large invasive plant pull (180 students).
- Hosted a spring (May) 2013 Aquatic Working Group meeting, and delivered on key working group action items including an Aquatic Invasive Species Workshop, which was held at the Mir Centre for Peace on October 4th in collaboration with the BC Ministry of Environment and Thompson Rivers University.
- Attended aquatic and terrestrial invasive plant identification and sampling workshops hosted by the Idaho Invasive Species Program. Opportunities for cross-border collaboration were discussed at these events including how to prevent the introduction of highly invasive zebra and quagga mussels.
- Created several new partnerships including PlayCleanGo, Kaslo Sufferfest Society, Pend Oreille County Noxious Weed Control Board, Bonner County Noxious Weed Department, Friends of Kootenay Lake, and Canada Living Lakes.

COMPLIANCE AND ENFORCEMENT

CKIPC does not deliver a compliance and enforcement program. Invasive plant complaints have been received via the CKIPC “hotline”, and the Executive Director and/or Program Manager provided whatever assistance and resources were available to mitigate the caller’s concerns. Some complaints resulted in a landowner visit. CKIPC partners were notified of any inquiries/complaints associated with their lands, as appropriate.

APPLIED RESEARCH TRIALS

CKIPC did not complete any applied research trails in 2013.

FINANCIAL STATEMENTS

The following table summarize revenue sources for 2013.

Table 1. Total revenue by funding agency for 2013

Total Revenue by Funding Agency	
Source of Revenue	Amount
MFLNRO	\$37,665.00
RDKB	\$4,974.00
RDCK	\$4,000.00
Ministry of Transportation & Infrastructure	\$12,000.00
Columbia Power Corp.	\$8,500.00
Evergreen	\$5,000.00
BC Hydro	\$15,000.00
Invasive Species Council Of BC	\$2,383.00
Columbia Basin Trust	\$49,950.00
BC Marine Trades Assoc.	\$2,500.00
Nature Conservancy of Canada	\$4,531.43
Government of Canada	\$6,477.00
Fortis BC Inc.	\$5,000.00
Fortis BC Energy Inc.	\$13,392.86
TNT-Meadow Creek	\$3,809.52
BC Conservation Foundation	\$4,240.17
Interest Revenue	\$270.82
Miscellaneous Revenue	\$437.00
Total	\$180,280.80

OPPORTUNITIES & CHALLENGES

Similar to previous years, there was very limited funding for private land activities (i.e., landowner visits) outside of Regional District of Kootenay Boundary Area A.

Generous funding and support from a broad range of agencies in 2013 allowed CKIPC to continue offering and enhancing outreach and education programs as well as delivering on-the-ground invasive plant management programs. Expanding on lessons learned from 2012, CKIPC was able to improve its approach to on-the-ground management and expand its inventory and mechanical control programs. Work conducted under 2013 programs will enable CKIPC to develop a comprehensive regional work plan in the winter of 2014, which will ensure timely and efficient delivery of programs in the spring and summer of 2014. Increased funded support and expansion of regional programs enabled CKIPC to support a project-based Program Assistant contract opportunity for the summer of 2013; CKIPC has secured funding to hire a Program Assistant again in 2014.

PROPOSED PROGRAM FOR 2014

The following section proposes key programs and activities to be undertaken by CKIPC, pending funding and available resources. Recommendations are provided under each of CKIPC's four program areas including: 1) education and awareness, 2) coordination, 3) on-the-ground treatment, and 4) inventory. For the purposes of this report, inventory will be included with on-the-ground treatment.

EDUCATION AND AWARENESS

2014 is shaping up to be an exciting year for CKIPC's education and awareness program as the committee was fortunate to receive funding from the Columbia Basin Trust to continue delivering education programs throughout the Central/West Kootenay region. CKIPC proposes the following activities to further enhance education and awareness in the region:

- Creating and expanding on outreach materials including the creation of information banners that regional stewardship and environmental organizations can use for their events.
- Maintaining the CKIPC website and Facebook page.
- Coordinating the invasive plant highway sign program with support from MOTI and other partners and contractors.
- Developing (as required) and distributing invasive plant identification, prevention, and management resources and brochures to the general public, private landowners, and land managers. This includes stocking or re-stocking visitor info centers, offices, libraries, and other key venues as guided by the Board of Directors and partners.
- Conducting landowner visits, as required and/or requested (pending funding).
- Developing and mailing out knotweed information packages to target landowners.
- Delivering a landowner contact program with respect to knotweed identification, prevention and management within the City of Nelson and RDCK Area E.
- Coordinating and delivering workshops, presentations and the Annual Field Tour/AGM throughout the region.
- Hosting informational booths at key events around the region.
- Coordinating the 1st Annual Invasive Species and Biodiversity Juried Art Competition and Exhibition from June 6th-15th, 2014.
- Coordinating and delivering community events during Invasive Species week, June 6th-15th, 2014
 - Invasive plant pulls and shoreline restoration at the Nelson Dog Walk Park
 - Scotch Broom Bash in Nakusp
 - "If you can't beat 'em, eat 'em" invasive species menu at Rel-ish Bistro, Nelson, BC
 - Not-A-Weed workshop, Nelson, BC
 - Opening Gala Event at the Rossland Art Gallery, June 6th, 2014
 - Invasive Species and Biodiversity Art Show, Rossland Art Gallery, June 6th-15th, 2014
 - Invasive Species Week banner, Baker Street, Nelson, BC

- Raising awareness and delivering “Grow Me Instead” and training for growers, retailers, gardening enthusiasts, and others involved in the horticulture and aquarium industry.
- Delivering the Youth Pulling Together and Communities Pulling Together Program.
- Development of an American Bullfrog Citizen Science program in collaboration with the Creston Valley Wildlife Management Area

COORDINATION

CKIPC anticipates that 2014 will see increased coordination and partnership delivery of on-the-ground programs, and improved collaboration between land managers in the delivery of regional invasive plant management programs. CKIPC will also focus on evaluating and enhancing existing programs, supporting the Aquatics Working Group, and diversifying funding and Board development opportunities.

CKIPC proposes the following activities to further enhance coordination in the region:

- Promoting provincial programs and resources.
- Hosting land manager and partner meetings and developing/revising associated *Invasive Plant Management Area (IPMA) Operational Plans*.
- Collaborating with neighbouring regional invasive species/plant councils and societies.
- Providing support to land managers, supporters, and partners as required.
- Coordinating the Aquatic Working Group and securing funds to deliver on work plan priorities including the development of a 5-year Aquatic Invasive Species Strategy for the West and Central Kootenay region.
- Securing funds to provide Board development opportunities and delivery priority programs.
- Developing CKIPC Board policies and updating the CKIPC Strategic Management Plan.
- Developing invasive species management plans for partners, as requested.

ON-THE-GROUND TREATMENT & INVENTORY

Delivering a coordinated invasive plant management program including inventory and management of priority species, and areas as identified in the 2014 work plan for all areas within the CKIPC region. This includes the regional coordination of invasive plant programs for the following organizations: FortisBC Inc., FortisBC Energy Inc., Teck Metals Ltd., Columbia Power Corporation, BC Hydro, MOTI, FLNRO, and RDKB (Areas A and B). Additional partnerships may be fostered in 2014.

CKIPC proposes the following activities to further enhance coordination in the region:

- Monitoring treatment trials on invasive knotweed and coltsfoot within the CKIPC region, and re-treating as required.
- Collaborating with MOTI roadside maintenance contractors, including Emcon and YRB.
- Collecting, shipping, monitoring and releasing biological control agents as directed by FLNRO.
- Inventorying partner lands, monitoring historical treatments, and recommending future management options.
- Mechanically controlling priority species and sites.
- Coordinating chemical control activities and completing efficacy monitoring.

