

CENTRAL KOOTENAY INVASIVE PLANT COMMITTEE

2014 ANNUAL SUMMARY REPORT



Report Prepared by:



Jennifer Vogel, P.Ag., Executive Director

March, 2014

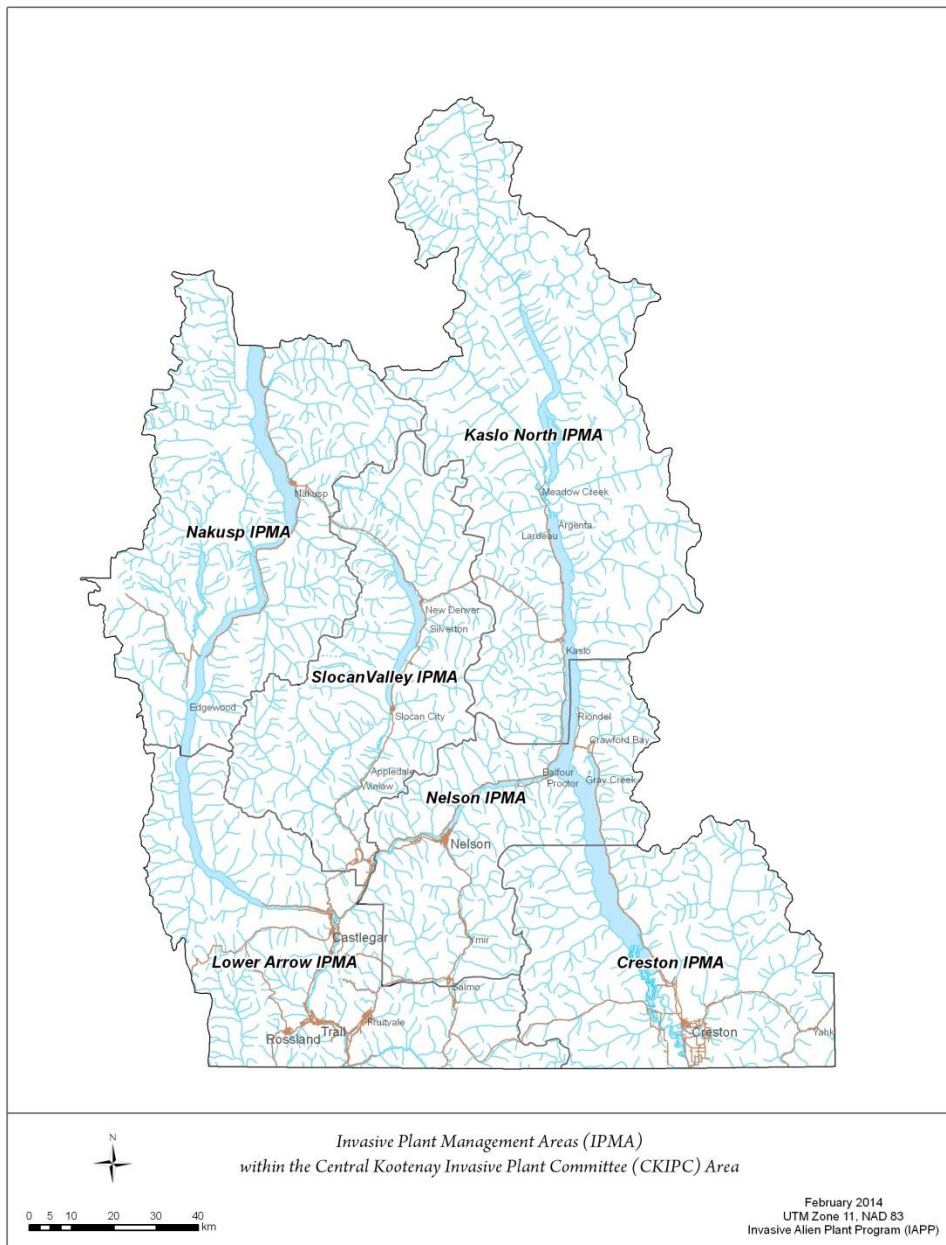
ACKNOWLEDGEMENTS

The Central Kootenay Invasive Plant Committee (CKIPC) is extremely grateful for funding contributions in 2014 from BC Parks, BC Hydro, Columbia Basin Trust, Columbia Power Corporation, FortisBC Inc., FortisBC Energy Inc., Fish and Wildlife Compensation Program, Invasive Species Council of British Columbia, Ministries of Forests, Lands and Natural Resource Operations, Ministry of Transportation and Infrastructure, Nature Conservancy of Canada, Regional District Kootenay Boundary, Regional District Central Kootenay, Teck Metals Ltd., and Waneta Expansion Ltd. Partnership. We would also like to acknowledge the generous in-kind support from directors, members, volunteers, and all other supporters who contributed to the successful and timely delivery of CKIPC's many projects and programs. **Thank you** and we look forward to working with you on many new and exciting initiatives in 2015!

INTRODUCTION

The Central Kootenay Invasive Plant Committee (CKIPC) was formed by a group of residents and company/agency representatives who were interested in promoting a collaborative approach to invasive plant management. CKIPC became a non-profit society in February 2005 and currently has over 400 members from a diversity of perspectives, including industry, all levels of government, concerned citizens and landowners, utilities, consultants, and non-government organizations.

Figure 1. Overview the Central Kootenay Invasive Plant (CKIPC) region



Vision Statement

A network of partners collaborating to minimize the impacts of invasive species on the ecosystems, communities, and economy of the Central Kootenay region.

Purposes

The Central Kootenay Invasive Plant Committee is a non-profit society that was formed by a group of residents and company/agency representatives who were interested in promoting collaborative approaches to invasive plant management in 2005. The Committee includes representatives from non-profit societies, utility companies, government agencies, and regional companies.

The purposes of the Society (as per the Committee's Constitution), within the geographic area of the Regional District of the Central Kootenay and Areas A & B of the Regional District of the Kootenay Boundary, are to:

1. Raise awareness and educate the public, government agencies, and other land managers about invasive species and their impacts in the area;
2. Prevent the further introduction and spread of invasive species in the area through education and awareness, early detection and control, and coordinated integrated weed management efforts;
3. Promote coordinated and collaborative management of invasive species between agencies and land occupiers;
4. Work towards the control/containment of highly invasive non-native species;
5. Provide a conduit for information and a source of expertise on invasive species; and
6. Develop and maintain a comprehensive inventory of invasive species within the area of responsibility.

CKIPC pursues these goals by focusing on four program areas: 1) inventory and mapping, 2) on-the-ground treatments, 3) coordination and administration, 4) education and awareness. CKIPC intends to continue expanding its collaborative on-the-ground operations through the development and implementation of Invasive Plant Management Area Operational Framework (IPMA) plans. CKIPC's activities focus on the Regional District of the Central Kootenay (RDCK) geographic area, and Areas A and B of the Regional District of the Kootenay Boundary (RDKB). Activities that occur within the RDKB are coordinated in collaboration with the Boundary Invasive Species Society (BISS).

The purpose of this report is to summarize activities completed by CKIPC from January, 1st 2014 to December, 31st, 2014, including inventory and mapping, on-the-ground treatments, administration and coordination, education and awareness, provincial and regional collaboration initiatives, and financial statements. Additionally, program activities are proposed for 2015.

SUMMARY OF ACTIVITIES

The following sections provide an overview of activities completed in 2014.

Inventory and Mapping

Similar to 2013, the strategy for inventory in 2014 was to complete multi-species inventory on high priority sites and/or where inventory gaps existed in the region. Where possible, multiple jurisdictions were inventoried within an area to increase program efficiencies. Site assessments and inventories were conducted, as required, prior to treatment activities (i.e., mechanical and/or chemical control). Provincial Invasive Alien Plant Program (IAPP) inventory standards (www.for.gov.bc.ca/hra/plants/application.htm) were used and a Site and Invasive Plant Inventory Record was completed for each site. All inventory data has been entered into IAPP for a total of 1103 completed invasive plant surveys in 2014.

BC Hydro

CKIPC completed extensive multi-species invasive plant inventories in the Lower Arrow, Nakusp and Creston IPMA's. Within these priority areas, approximately 100 km of BC Hydro ROW was surveyed.

BC Parks

Approximately 71 hectares of BC Parks land was inventoried in West Arm Provincial Park, Pilot Bay Provincial Park, and McDonald Creek Provincial Park. Invasive species include annual hawksbeard, bull thistle, burdock, Canada thistle, chicory, common tansy, hairy cat's-ear, invasive hawkweeds, mullein, nightshade, oxeye daisy, Queen Anne's lace, Scotch broom, spotted knapweed, St. John's wort, Sulphur cinquefoil and wormwood. Aquatic invasive species surveys were also completed at Davis Creek, Lost Ledge, Kokanee Creek, Garland Bay, Beaver Creek, Syringa Creek, Pilot Bay, Summit Lake and Nancy Greene Lake.

Columbia Power Corporation

The Columbia Power Corporation (CPC) provided funding for aquatic invasive species surveys as well as terrestrial surveys. The Aquatic Invasive Species Program was made possible by funding from the CPC and from the Fish and Wildlife Compensation Program.

Aquatic Invasive Species Program

In 2014, 21 veliger monitoring stations were sampled on a regular basis in 2014 as per provincial standard sampling methods. Five adult mussel monitoring traps (substrate samplers) were built and installed at priority boat launches around the region. All samples were submitted for analysis and no zebra quagga adults or veligers were detected.

Full shoreline aquatic invasive plant species surveys were completed on the following lakes: Wilson, Little Wilson, Box, Summit, Rosebud, Nancy Greene, Cottonwood, Staubert, Fish, Bear, and Little Slocan. Presence absence surveys were completed at high use areas (i.e., beaches, boat launches, cabin docks, outflows, creek entries, marinas, public access points, etc.) for the following water bodies: Trout Lake, Armstrong Lake, Kootenay River, Kootenay Lake, Columbia River and Slocan Lake.

Terrestrial Program

Based on a thorough review of historical documents provided by CPC a gap analysis was performed and inventory and treatment priorities were established for 2014 and 2015. The ROW from Brilliant Dam to Champion Lakes was inventoried and treatments for 2015 were recommended.

FortisBC Inc.

This was the fourth year that CKIPC partnered with FortisBC Inc. (electrical) to conduct inventories and manual treatments on high priority power line ROWs throughout the Central/West Kootenay Region. In addition, to general inventories and treatments on FortisBC Inc. ROW's the CKIPC worked on two special projects within Shoreacres and along 22-24 L powerlines.

FortisBC Energy Inc.

CKIPC completed extensive multi-species invasive plant inventories in 2014; 99 ha of ROW was inventoried. The CKIPC has expanded its inventories from the Southern Crossing ROW to all ROW's within our region.

Ministry of Forests, Lands and Natural Resource Operations

CKIPC completed extensive multi-species invasive plant inventories. Target species that were concentrated on included; giant hogweed, greater celandine, blueweed, scotch broom, Himalayan blackberry, mouse-ear hawkweed, greater knapweed and other regional priority invasive plant species.

Ministry of Transportation and Infrastructure (RDKB Area A and B, RDCK)

CKIPC conducted inventories for the Ministry of Transportation and Infrastructure (MOTI) throughout the RDKB (Areas A and B) and the RDCK. Activities focused on inventory gaps, gravel pits and invasive knotweed; 600 km of MOTI right of ways (ROW) and 104 ha of gravel pits were surveyed in 2014. As required, inventories and site assessments were completed prior to chemical treatments within the RDKB (McLeod Road, Seven Mile Road, Hwy 22A, Columbia Gardens, Casino Road, Station Road, Waneta-Nelway Road, Handley Road, Hwy 3B and Hutchison Pit). These inventories were carried out on both private and partner lands using CKIPC's *Priority Terrestrial Target Species* list.

Regional District Kootenay Boundary (Area A)

This was the fifth year that the CKIPC coordinated the *RDKB Area A Invasive Plant Program* in collaboration with Boundary Invasive Species Committee. During the 2014 season, CKIPC coordinated chemical and manual treatments, conducted inventories and efficacy checks, and provided information and educational resources to landowners and the general public. CKIPC completed several extensive invasive plant inventories on 140 hectares of land. These inventories were carried out on both private and partner lands using CKIPC's *Priority Terrestrial Target Species* list¹.

¹ http://www.ckipc.ca/images/documents/CKIPC_IP_Priority_List__website_updated_2013.pdf

The Nature Conservancy of Canada

CKIPC completed extensive multi-species invasive plant inventories in 2014 within the Frog_Bear Lot 3 and 154, Midge and Darkwoods properties. The most common invasive species noted within these properties were spotted knapweed, common tansy, burdock, hawkweed species, oxeye daisy and a variety of thistle species.

Teck Metals Ltd.

In 2014, the CKIPC completed inventory on high priority invasive knotweed sites on various Teck Metals Ltd. properties. 20 hectares was inventoried on Casino, Violin, Hannah Creek and Hannah Roads. In addition on property holdings within the *RDKB Area A Noxious Weed Bylaw Program*.

On-The-Ground Treatments

CKIPC coordinated a variety of chemical and mechanical treatments on behalf of its partners in 2014. A brief summary of treatments is provided below:

BC Parks

- Mechanical treatment of fragrant water lily and yellow flag iris.

BC Hydro

- Mechanical treatment of fuller's teasel in the Lower Arrow IPMA within the Pend D'Oreille valley,
- Mechanical treatment of 23 sites of yellow flag iris in the Lower Arrow IPMA within the Pend D'Oreille River,
- Mechanical treatment of scentless chamomile in the Naksup IPMA,
- 5.75 hectares treated by Kootenay Weed Control in the Lower Arrow IPMA,
- 1.27 hectares treated by the Creston Valley Beef Growers Association in the Creston IPMA.

Columbia Power Corporation

- No treatments completed in 2014.

FortisBC Inc. (electric)

- Mechanical treatment of 2 hectares of Scotch broom at Corra Linn,
- Mechanical treatment of blueweed in the Nelson IPMA,
- Mechanical treatment of purple loosestrife and yellow flag iris within the Kootenay Canal, bird marsh and Slocan pool area,
- 3 patches of knotweed treated by Kootenay Weed Control in the Nelson IPMA.

FortisBC Energy Inc.

- Mechanical treatment of fuller's teasel in the Lower Arrow IPMA,
- 3.29 hectares treated by Kootenay Weed Control in the Lower Arrow IPMA,
- 9 hectares treated by the Creston Valley Beef Growers Association in the Creston IPMA.

Ministry of Transportation and Infrastructure

- Mechanical treatment of knotweed, blueweed, scentless chamomile, fuller's teasel, purple loosestrife, yellow flag iris and Scotch broom in the Lower Arrow, Nelson, Kaslo North, Creston, Slocan Valley and Nakusp IPMA,
- 17 hectares treated by Kootenay Weed Control in the Lower Arrow, Nakusp and Slocan Valley IPMA.

Regional District Kootenay Boundary

- Mechanical treatment of fuller teasel, knotweed, policeman's helmet, purple loosestrife and hoary alyssum,
- 60 hectares treated by Kootenay Weed Control for multiple funders including, private landowners, Ministry of Transportation and Infrastructure, BC Hydro, FortisBC Energy Inc., Teck Metals Ltd. and Columbia Power Corporation.

The Nature Conservancy of Canada

- Mechanical treatment of blueweed,
- 1.88 hectares of priority road networks treated by Kootenay Weed Control within the Darkwoods.

Teck Metals Ltd.

- 0.1797 hectares of knotweed were treated on Teck Metals Ltd. properties by Kootenay Weed Control.

ADMINISTRATION & COORDINATION

As of December 31st 2014, CKIPC's Board of Directors included:

- Laurie Carr, President
- Tom Bradley, Vice President
- Terry Anderson, Treasurer/Secretary
- Carol Bell, Director
- Rob Davidson, Director
- Allan Freeborn, Director
- Catherine MacRae, Director
- Thor Smested, Director
- Jim May, Past President, Director
- Raegan Mallinson, Director

Crystal Klym, Executive Director and Jennifer Vogel, Program Manager provided overall program management and coordination. Khaylish Fraser, Aquatic Invasive Species Program Coordinator, coordinated all Aquatic Invasive Species programming on behalf of CKIPC in 2014. CKIPC has continued to expand its on-the-ground operations and educational programs in 2014 with successful funding collaborations and partnerships that have been fostered by Crystal Klym, Jennifer Vogel, and the Board of Directors. In addition, the CKIPC hired its second year of summer students in 2014. Matt Chilakos (our 2013 summer student) and Matt Fraser, a student of the Selkirk College Integrated Environmental Program, joined the team for the 2014 field season. We look forward to continuing the summer student program in 2015.

Administrative activities that occurred in 2014 included financial resource development and management, fund development, program budget development and management, bookkeeping, and financial reporting.

Coordination activities that occurred in 2014 included Board of Director and sub-committee coordination; hotline management; membership and partnership development; strategic planning; communications and information sharing; overall program coordination and management; cross-border/jurisdiction collaboration; weed coordinator working group and Invasive Species Council of BC participation; Aquatic Working Group coordination; final reporting; website, Facebook and blog updates; annual tours; and the annual general meeting.

Data management that occurred in 2014 included data entry into IAPP and mapping for operations and planning.

EDUCATION & AWARENESS

Activities undertaken in 2014 included delivery of presentations and workshops, participation in community events, landowner contact, and creation and distribution of outreach tools and publications. These activities were made possible through the funding opportunities provided by RDKB, the Province of BC, Columbia Power Corporation, Invasive Species Council of BC, Ministry of Transportation and Infrastructure and Columbia Basin Trust. A detailed summary of 2013 education and awareness activities is listed below;

- 3261 individuals reached through targeted education and awareness campaigns, included workshops, field trips, trade shows, plant exchanges and events.
- 3571 publications and resources distributed, including but not limited to CKIPC profiles and ISCBC TIPS.
- 10 knotweed No-Mow signs distributed.
- 8 media opportunities, including radio, print and television.

COMPLIANCE AND ENFORCEMENT

CKIPC does not deliver a compliance and enforcement program. Invasive plant complaints have been received via the CKIPC “hotline”, and the Executive Director and/or Program Manager provided

whatever assistance and resources were available to mitigate the caller's concerns. Some complaints resulted in a landowner visit. CKIPC partners were notified of any inquiries/complaints associated with their lands, as appropriate.

APPLIED RESEARCH TRIALS

CKIPC did not complete any applied research trails in 2014.

FINANCIAL STATEMENTS

The following table summarizes revenue sources for 2014.

Table 1. Total revenue by funding agency for 2014

| Total Revenue by Funding Agency | | |
|---|---------------------|---------------|
| Source of Revenue | | Amount |
| BC Hydro | | \$21,000.00 |
| BC Parks | | \$6,200.00 |
| Government of Canada | | \$ 6,525.00 |
| Columbia Basin Trust | | \$127,000.00 |
| Columbia Power Corp. | | \$39,600.00 |
| Fortis BC Inc. | | \$12,000.00 |
| Fortis BC Energy Inc. | | \$15,000.00 |
| Invasive Species Council Of BC | | \$500.00 |
| Ministry of Forests, Lands and Natural Operations | | \$67,000.00 |
| Ministry of Transportation and Infrastructure | | \$30,000.00 |
| Nelson District Credit Union | | \$500.00 |
| Regional District Kootenay Boundary | | \$4,900.00 |
| The Nature Conservancy of Canada | | \$18,500.00 |
| Teck Metals Ltd. | | \$15,000.00 |
| WAX Funding | | \$7,500.00 |
| Fish and Wildlife Compensation Program | | \$41,190.00 |
| Total | \$412,415.00 | |

OPPORTUNITIES & CHALLENGES

Similar to previous years, there was very limited funding for private land activities (i.e., landowner visits) outside of Regional District of Kootenay Boundary Area A.

Generous funding and support from a broad range of agencies in 2014 allowed CKIPC to continue offering and enhancing outreach and education programs as well as delivering on-the-ground invasive plant management programs. Expanding on lessons learned from 2013, CKIPC was able to improve its approach to on-the-ground management and expand its inventory and mechanical control programs. Work conducted under 2014 programs will enable CKIPC to develop a comprehensive regional work plan

in the winter of 2015, which will ensure timely and efficient delivery of programs in the spring and summer of 2015. Increased funded support and expansion of regional programs enabled CKIPC to hire an additional summer student.

PROPOSED PROGRAM FOR 2015

The following section proposes key programs and activities to be undertaken by CKIPC, pending funding and available resources. Recommendations are provided under each of CKIPC's four program areas including: 1) education and awareness, 2) coordination, 3) on-the-ground treatment, and 4) inventory. For the purposes of this report, inventory will be included with on-the-ground treatment.

EDUCATION AND AWARENESS

2015 is shaping up to be an exciting year for CKIPC's education and awareness program as the committee was fortunate to receive funding from the Columbia Basin Trust to continue delivering education programs throughout the Central/West Kootenay region. CKIPC proposes the following activities to further enhance education and awareness in the region:

- Rebrand the CKIPC to encompass our expanding work with invasive animals.
- Change our Society name to the Central Kootenay Invasive Species Society to reflect our expanding work with invasive animals.
- Creating and expanding on outreach materials including the creation of information banners that regional stewardship and environmental organizations can use for their events.
- Development of a new website to reflect expansion of programming to include invasive animals.
- Development of a communication strategy for 2015 and beyond.
- Hiring of a dedicated Education Program Coordinator.
- Developing (as required) and distributing invasive plant identification, prevention, and management resources and brochures to the general public, private landowners, and land managers. This includes stocking or re-stocking visitor info centers, offices, libraries, and other key venues as guided by the Board of Directors and partners.
- Conducting landowner visits, as required and/or requested (pending funding).
- Developing and mailing out knotweed information packages to target landowners within municipalities and MOTI ROW's.
- Coordinating and delivering workshops, presentations and the Annual Field Tour/AGM throughout the region.
- Hosting informational booths at key events around the region.
- Coordinating and delivering community events during Invasive Species month in June 2016.
- Raising awareness and delivering Plantwise and Clean-Drain-Dry.
- Delivering the Youth Pulling Together and Communities Pulling Together Program.
- Development of an American Bullfrog Citizen Science program in collaboration with the Creston Valley Wildlife Management Area

COORDINATION

CKIPC anticipates that 2015 will see increased coordination and partnership delivery of on-the-ground programs, and improved collaboration between land managers in the delivery of regional invasive plant management programs. CKIPC will also focus on evaluating and enhancing existing programs, supporting the Aquatics Working Group, and diversifying funding and Board development opportunities.

CKIPC proposes the following activities to further enhance coordination in the region:

- Promoting provincial programs and resources.
- Hosting land manager and partner meetings and developing/revising associated *Invasive Plant Management Area (IPMA) Operational Plans*.
- Collaborating with neighbouring regional invasive species/plant councils and societies.
- Providing support to land managers, supporters, and partners as required.
- Coordinating the Aquatic Working Group.
- Securing funds to provide Board development opportunities and delivery priority programs.
- Developing CKIPC Board policies and updating the CKIPC Strategic Management Plan.
- Developing invasive species management plans for partners, as requested.

ON-THE-GROUND TREATMENT & INVENTORY

Delivering a coordinated invasive plant management program including inventory and management of priority species, and areas as identified in the 2015 work plan for all areas within the CKIPC region. This includes the regional coordination of invasive plant programs for the following organizations: FortisBC Inc., FortisBC Energy Inc., Teck Metals Ltd., Columbia Power Corporation, BC Hydro, MOTI, FLNRO, and RDKB (Areas A and B). Additional partnerships may be fostered in 2015.

CKIPC proposes the following activities to further enhance coordination in the region:

- Monitoring treatment trials on invasive knotweed and coltsfoot within the CKIPC region, and re-treating as required.
- Collaborating with MOTI roadside maintenance contractors, including Emcon and YRB.
- Collecting, shipping, monitoring and releasing biological control agents as directed by FLNRO.
- Inventorying partner lands, monitoring historical treatments, and recommending future management options.
- Mechanically controlling priority species and sites.
- Coordinating chemical control activities and completing efficacy monitoring.