

CENTRAL KOOTENAY INVASIVE PLANT COMMITTEE

2012 SUMMARY REPORT



Report Prepared by:



Crystal Klym, P.Ag., Executive Director
Jennifer Vogel, P.Ag., Program Manager
Matt Chilakos, Program Technician

February 2013

ACKNOWLEDGEMENTS

The Central Kootenay Invasive Plant Committee (CKIPC) is extremely grateful for funding contributions in 2012 from the Province of British Columbia (Ministries of Forests, Lands and Natural Resource Operations and Transportation and Infrastructure), Regional District Kootenay Boundary, Columbia Power Corporation, Kootenay Columbia Trail Society, BC Hydro, Invasive Species Council of British Columbia, Columbia Basin Trust, FortisBC Inc., ATCO Wood Products, BC Wildlife Federation, The Nature Trust of BC, BC Conservation Foundation, and Waneta Expansion Ltd. Partnership. We would also like to acknowledge the generous in-kind support from directors, members, volunteers, and all other supporters who contributed to the successful and timely delivery of CKIPC's many projects and programs. **Thank you** and we look forward to working with you on many new and exciting initiatives in 2013!

INTRODUCTION

The Central Kootenay Invasive Plant Committee (CKIPC) was formed by a group of residents and company/agency representatives who were interested in promoting a collaborative approach to invasive plant management. CKIPC became a non-profit society in February 2005 and currently has over 380 members from a diversity of perspectives, including industry, all levels of government, concerned citizens and landowners, utilities, consultants, and non-government organizations. CKIPC's overall program goals are to:

- Raise awareness and educate the public, government agencies, and other land managers about invasive plants and their impacts in the area;
- Prevent the further introduction and spread of invasive plants through the education and awareness, early detection and control, and coordinated integrated weed management efforts;
- Promote coordinated and collaborative management of invasive plants between agencies and land occupiers;
- Work toward the control/containment of highly invasive non-native plant species;
- Provide a conduit for information and a source of expertise on invasive plants; and
- Develop and maintain a comprehensive inventory of invasive plant species within the CKIPC area.

CKIPC pursues these goals by focusing on four program areas: 1) inventory and mapping, 2) on-the-ground treatments, 3) coordination and administration, 4) education and awareness. CKIPC intends to continue expanding its collaborative on-the-ground operations through the development and implementation of Invasive Plant Management Area Operational Framework plans. CKIPC's activities focus on the Regional District of the Central Kootenay (RDCK) geographic area, and Areas A and B of the Regional District of the Kootenay Boundary (RDKB). Activities that occur within the RDKB are coordinated in collaboration with the Boundary Invasive Species Committee (BISC).

The purpose of this report is to summarize activities completed by CKIPC from January 1st to December 31st 2012, including inventory and mapping, on-the-ground treatments, administration and coordination, education and awareness, provincial and regional collaboration initiatives, and financial statements. Additionally, program activities are proposed for 2013.

INVENTORY AND MAPPING

Similar to 2011, the strategy for inventory in 2012 was to complete multi-species inventory on high priority sites and/or where inventory gaps existed in the region. Where possible, multiple jurisdictions were inventoried within an area to increase program efficiencies. Site assessments and inventories were conducted, as required, prior to treatment activities (i.e., mechanical and/or chemical control). Provincial Invasive Alien Plant Program (IAPP) inventory standards (www.for.gov.bc.ca/hra/plants/application.htm) were used and a Site and Invasive Plant Inventory Record was completed for each site. All inventory data has been entered into IAPP for a total of 185 completed invasive plant surveys in 2012.

REGIONAL DISTRICT KOOTENAY BOUNDARY (AREA A)

This was the third year that the CKIPC coordinated the *RDKB Area A Invasive Plant Program* in collaboration with Boundary Invasive Species Committee. During the 2012 season, CKIPC coordinated chemical and manual treatments, conducted inventories and efficacy checks, and provided information and educational resources to landowners and the general public. CKIPC completed several extensive invasive plant inventories in 2012, to ascertain priority areas and to provide data for the spring 2013 strategic planning process. These inventories were carried out on both private and partner lands using CKIPC's Priority Terrestrial Target Species list¹.

MINISTRY OF FORESTS, LANDS AND NATURAL RESOURCE OPERATIONS (HILLS, LITTLE SLOCAN RECREATION SITE, WHATSHAN LAKE/FSR, THRUMS, KOKANNE CREEK PROV. PARK)

CKIPC completed extensive multi-species invasive plant inventories. Target species that were concentrated on included; giant hogweed (*Heracleum mantegazzianum*), greater celandine (*Chelidonium majus*), blueweed (*Echium vulgare*), scotch broom (*Cytisus scoparius*), Himalayan blackberry (*Rubus armeniacus*), mouse-ear hawkweed (*Hieracium pilosella*), and other regional priority invasive plant species.

MINISTRY OF TRANSPORTATION AND INFRASTRUCTURE (RDKB AREA A AND B, RDCK)

CKIPC conducted inventories for the Ministry of Transportation and Infrastructure (MOTI) throughout the RDKB (Areas A and B) and the RDCK. Activities focused on inventory gaps, invasive knotweed and gravel pits. As required, inventories and site assessments were completed prior to chemical treatments within the RDKB (McLeod Road, Seven Mile Road, Hwy 22A, Columbia Gardens, Casino Road, Station Road, Waneta-Nelway Road, Handley Road, Hwy 3B and Hutchison Pit). These inventories were carried out on both private and partner lands using CKIPC's *Priority Terrestrial Target Species* list.

BC HYDRO (PEND D'OREILLE, KIDD CREEK)

During the 2012 season, CKIPC coordinated and conducted inventories and efficacy checks, and provided information and educational resources to landowners and the general public within the boundaries of the *RDKB Area A Invasive Plant Program*. CKIPC completed additional inventories along Kidd Creek, east of Creston, as well as in the Pend D'Oreille area. Further inventory and treatment activities are scheduled for the 2013 field season. These inventories were carried out on both private and partner lands using CKIPC's Priority Terrestrial Target Species list.

FORTISBC INC. (SOUTH SLOCAN, BONNINGTON, CORRA LINN TOWNSITE)

This was the second year that CKIPC partnered with FortisBC Inc. (Electrical) to conduct inventories and manual treatments on high priority power line ROWs throughout the Central/West Kootenay Region. This included the South Slocan and Bonnington regions, as well as the Corra Linn townsite. CKIPC completed extensive multi-species invasive plant inventories. These inventories were carried out on both private and partner lands using CKIPC's Priority Terrestrial Target Species list.

¹ http://ckipc.ca/images/documents/CKIPC_IP_Priority_List_July2012_website.pdf

THE NATURE TRUST OF BC, CONSERVATION PROPERTIES (MEADOW CREEK)

CKIPC completed extensive multi-species invasive plant inventories in the Meadow Creek area. Target species that were concentrated on included; burdock (*Arctium* spp.) and invasive hawkweeds (*Hieracium* spp.), as well as other priority invasive plant species.

KOOTENAY COLUMBIA TRAILS SOCIETY (TRAIL)

During the 2012 season, CKIPC coordinated and conducted inventories, and provided information and educational resources to landowners and the general public associated with the *Kootenay Columbia Trails Society*. CKIPC completed extensive multi-species invasive plant inventories. These inventories were carried out on both private and partner lands using CKIPC's Priority Terrestrial Target Species list.

SUMMARY OF ACTIVITIES

On-The-Ground Treatments

CKIPC and its partners chemically treated approximately 31 ha of land for a total cost of \$24,500.00 and mechanically treated approximately 16 ha of land for a total cost of \$34,900.00. A detailed breakdown is provided below:

- CKIPC chemically treated 30 m² of Ministry of Forests, Lands and Natural Resources land for a total of \$2,000.00 and mechanically treated 1.02 ha for a total cost of \$12,000.00.
- CKIPC chemically treated 10 ha of Ministry of Transportation and Infrastructure land for a total of \$3,500.00 and mechanically treated 11.5 ha for a total cost of \$11,000.00.
- CKIPC chemically treated 13 ha of BC Hydro land for a total of \$9,500.00, and mechanically treated 1.5 ha for a total cost of \$4,000.00.
- CKIPC did not chemically treat any FortisBC Inc. land and mechanically treated 1 ha for a total cost of \$3,800.00.
- CKIPC chemically treated 8 ha of FortisBC Energy Inc. land for a total of \$9,500.00 and mechanically treated 0.3 ha for a total cost of \$2,100.00.
- CKIPC chemically treated 0.09 ha of BC Parks land (pro bono) and did not mechanically treat any land.

Administration & Coordination

As of December 31st 2012, CKIPC's Board of Directors included:

- Jim May, Contractor (President)
- Tom Bradley, Slocan Integral Forestry Co-Operative & West Kootenay Woodlot Association (Vice-President)
- Terry Anderson, FLNRO (Treasurer)
- Laurie Carr, Ecologist (Secretary)
- Carol Bell
- Rob Davidson, Creston Valley Beef Growers Association

- Allan Freeborn, Kootenay Weed Control
- Catherine MacRae, FLNRO, and
- Thor Smestad, Contractor.

Crystal Klym, Executive Director and Jennifer Vogel, Program Manager provided overall program management and coordination. CKIPC has continued to expand its on-the-ground operations and educational programs in 2012 with successful funding collaborations and partnerships that have been fostered by Crystal Klym, Jennifer Vogel, and the Board of Directors. Juliet Craig of Silverwing Ecological Consulting joined CKIPC as a consulting biologist, and provided invaluable expertise to the CKIPC team.

Administrative activities that occurred in 2012 included financial resource development and management, fund development, program budget development and management, bookkeeping, and financial reporting.

Coordination activities that occurred in 2012 included Board of Director and sub-committee coordination; hotline management; membership and partnership development; strategic/IPMA planning (Lower Arrow-Pend D'Oreille, Creston); communications and information sharing; overall program coordination and management; cross-border/jurisdiction collaboration; weed coordinator working group and Invasive Species Council of BC participation; Aquatic Working Group coordination; final reporting; website, Facebook and blog updates; annual tours; and the annual general meeting.

Data management that occurred in 2012 included data entry into IAPP and mapping for operations and planning.

Education & Awareness

One of CKIPC's main program areas is education and awareness. Key messages include:

- Invasive plants threaten our ecosystems and economy;
- Humans are the biggest source of spread of invasive plants;
- Prevention is the best control option; and
- Collaboration and cooperation is the key to successful invasive plant management in the Central Kootenay region and across the province.

As with previous years, activities undertaken in 2012 include delivery of presentations and workshops, participation in community events, landowner contact, and creation and distribution of outreach tools and publications. These activities were made possible through the funding opportunities provided by RDKB, the Province of BC, Columbia Power Corporation, Kootenay Columbia Trail Society, BC Hydro, Invasive Species Council of BC, Columbia Basin Trust, FortisBC Inc., BC Wildlife Federation, and BC Conservation Foundation.

In 2012, CKIPC provided 25 presentations/events/workshops that reached approximately 1000 people. CKIPC also developed an Aquatic Invasive Species brochure and Terrestrial Invasive Species booth. CKIPC was also a part of 6 media-related events and 9 news articles.

Compliance and Enforcement

CKIPC does not deliver a compliance and enforcement program. Invasive plant complaints have been received via the CKIPC “hotline”, and the Executive Director and/or Program Coordinator provided whatever assistance and resources were available to mitigate the caller’s concerns. Some complaints resulted in a landowner visit. CKIPC partners were notified of any inquiries/complaints associated with their lands, as appropriate.

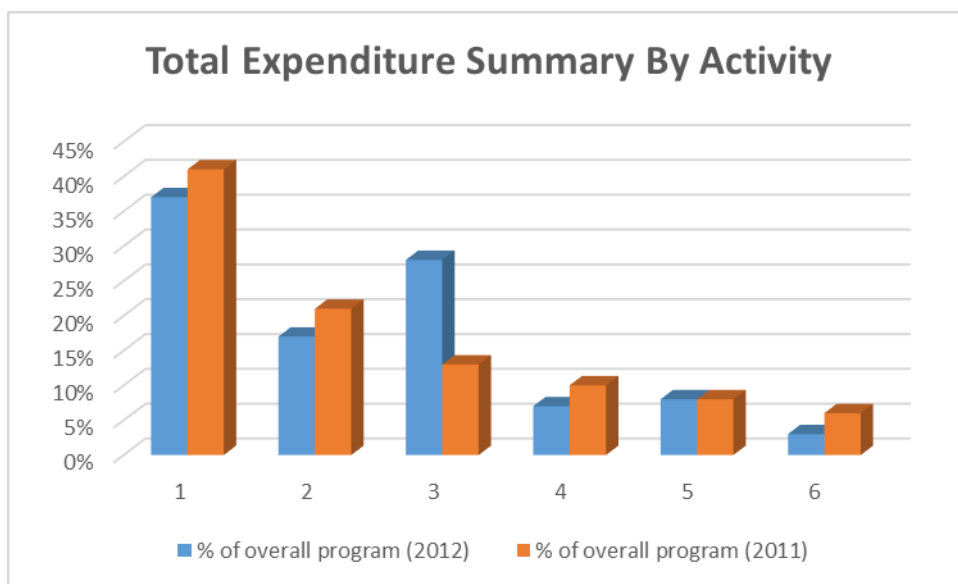
Applied Trials (Research)

In 2012, CKIPC took part in a mechanical and chemical removal trial of Bohemian knotweed (*Polygonum x bohemicum*). The manual removal (mechanical) of the plant was by cutting the stem at ground level and the chemical trial was done in several ways including cutting and inserting chemicals directly into the plant, stem injections, foliar spray, and by wick-on methods. No bio-control trials were conducted in 2012.

FINANCIAL

Total Revenue Summary by Funding Agency		
Source of Revenue		Amount
MLFNRO		\$52,000.00
RDKB		\$4,900.00
AGM Revenue		\$375.00
Ministry of Transportation & Infrastructure		\$15,500.00
Columbia Power Corp.		\$300.00
Kootenay Columbia Trail Society		\$250.00
BC Hydro		\$16,000.00
Invasive Species Council of BC		\$150.00
Columbia Basin Trust		\$29,879.50
Fortis BC Inc.		\$5,000.00
Fortis BC Energy Inc.		\$13,392.86
ATCO Wood Products		\$250.00
Take Action-ISCBC		\$7,586.13
BCWF Wetlandkeepers		\$1,500.00
WELP Revenue		\$7,500.00
TNT-Meadow Creek		\$3,453.18
BC Conservation Foundation		\$2,000.00
Interest Revenue		\$271.86
	Total	\$160,288.53

Total Expenditure Summary By Activity				
	Total	% of overall program (2012)	% of overall program (2011)	% change since 2011
1. On-The-Ground Treatments (Incl. Inventory)	\$71,974.56	37%	41%	-3%
2. Administration & Coordination & Strategic (IPMA) Planning	\$33,222.34	17%	21%	-4%
3. Education & Awareness	\$53,065.94	28%	13%	15%
4. Special Projects: Risk Assessments	\$13,000.00	7%	10%	-4%
5. Travel	\$15,568.37	8%	8%	0%
6. Administrative Expenses	\$5,965.80	3%	6%	-3%
Total Expenditure	\$192,797.01	100%	100%	



OPPORTUNITIES & CHALLENGES

Similar to previous years, there was very limited funding for private land activities (i.e., landowner visits) outside of Regional District of Kootenay Boundary Area A.

Generous funding and support from a broad range of agencies in 2012 allowed CKIPC to continue offering and enhancing outreach and education programs as well as delivering on-the-ground invasive plant management programs. Expanding on lessons learned from 2011, CKIPC was able to improve its approach to on-the-ground management and expand its inventory and mechanical control programs. Work conducted under 2012 programs will enable CKIPC to develop a comprehensive regional work plan in the winter of 2013, which will ensure timely and efficient delivery of programs in the spring and summer of 2013. Increased funded support and expansion of regional programs enabled CKIPC to support a project-based Program Assistant contract opportunity for the summer of 2013.

PROPOSED PROGRAM FOR 2013

The following section proposes key programs and activities to be undertaken by CKIPC, pending funding and available resources. Recommendations are provided under each of CKIPC's four program areas including: 1) education and awareness, 2) coordination, 3) on-the-ground treatment, and 4) inventory. For the purposes of this report, inventory will be included with on-the-ground treatment.

Education and Awareness

2013 is shaping up to be an exciting year for CKIPC's education and awareness program as the committee was fortunate to receive funding from the Columbia Basin Trust to continue delivering education programs throughout the Central/West Kootenay region. CKIPC proposes the following activities to further enhance education and awareness in the region:

- Creating and expanding on outreach materials including invasive plant profiles.
- Maintaining the CKIPC website and Facebook page.
- Coordinating the invasive plant highway sign program with support from MOTI and other partners and contractors.
- Developing (as required) and distributing invasive plant identification, prevention, and management resources and brochures to the general public, private landowners, and land managers. This includes stocking or re-stocking visitor info centers, offices, libraries, and other key venues as guided by the Board of Directors and partners.
- Conducting landowner visits, as required and/or requested (pending funding).
- Developing and mailing out knotweed information packages to target landowners.
- Delivering a landowner contact program with respect to knotweed identification, prevention and management within the City of Nelson.
- Coordinating an Earth Day event and Annual Field Tour/AGM.
- Hosting informational booths at key events around the region.
- Providing Municipal Council presentations within the RDKB and RDCK.
- Raising awareness and delivering "Grow Me Instead" and training for growers, retailers, gardening enthusiasts, and others involved in the horticulture and aquarium industry. This includes delivering a workshop through Selkirk College's Continuing Education Program.
- Delivering the Youth Pulling Together Program.

Coordination

CKIPC anticipates that 2013 will see increased coordination and partnership delivery of on-the-ground programs, and improved collaboration between land managers in the delivery of regional invasive plant management programs. CKIPC will also focus on evaluating and enhancing existing programs, supporting the Aquatics Working Group, and diversifying funding and Board development opportunities.

CKIPC proposes the following activities to further enhance coordination in the region:

- Promoting provincial programs and resources including the ISCBC's Clean-Drain-Dry Program.
- Hosting Nelson and Nakusp land manager and partner meetings and developing the associated *Invasive Plant Management Area (IPMA) Operational Plans*.

- Collaborating with the Creston Valley Beef Growers Association to deliver a coordinated invasive plant program from Yahk to Creston and through to Salmo.
- Providing support to land managers, supporters, and partners as required.
- Coordinating the Aquatic Working Group and securing funds to deliver on work plan priorities including the development of a 5-year Aquatic Invasive Species Strategy for the West and Central Kootenay region.
- Securing funds to provide Board development opportunities and delivery priority programs.
- Developing CKIPC Board policies and updating the Central Kootenay Strategic Management Plan.
- Developing invasive plant stewardship plans for partners, as requested.

On-the-Ground Treatment & Inventory

Delivering a coordinated invasive plant management program including inventory and management of priority species, and areas as identified in the 2013 work plan for all areas within the CKIPC region. This includes the regional coordination of invasive plant programs for the following organizations: FortisBC Inc., BC Hydro, MOTI, FLNRO, and RDKB (Areas A and B). Additional partnerships may be fostered in 2013.

CKIPC proposes the following activities to further enhance coordination in the region:

- Monitoring treatment trials on invasive knotweed and coltsfoot within the CKIPC region, and re-treating as required.
- Collaborating with MOTI roadside maintenance contractors, including Emcon and YRB.
- Collecting, shipping, monitoring and releasing biological control agents as directed by FLNRO.
- Inventorying partner lands, monitoring historical treatments, and recommending future management options.
- Mechanically controlling priority species and sites.
- Coordinating chemical control activities and completing efficacy monitoring.